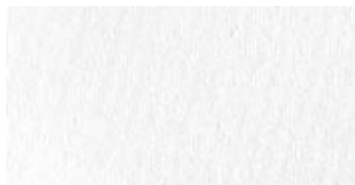


SAFESHADE FABRIC COLLECTION

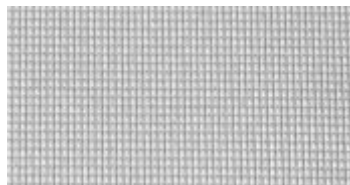
**Light Control Ice**

Privacy: 10**

Light control: 85-90+%***

70% cotton & polyester

Extremely low emission, insulating,
heat reduction, noise reduction,
Privacy, & fade reduction.

**Privacy Screen Moonstone**

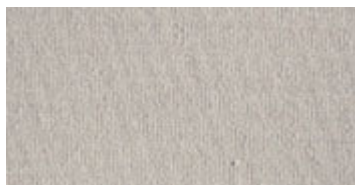
Privacy: 9**

Light control: 10%***

89% Recycled polyester

Privacy, Daylighting, Heat & Fade
reduction.

Cradle 2 Cradle, Greenguard Gold, &
RoHS

**Light Control Silver**

Privacy: 10**

Light control: 85-90+%***

70% cotton & polyester

Extremely low emission, insulating,
heat reduction, noise reduction,
Privacy & fade reduction

**Privacy Screen + Powder**

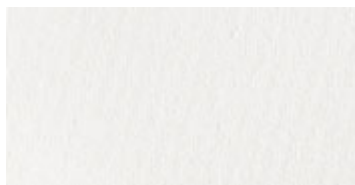
Privacy: 9**

Light control: 12%***

100% polyester

Formaldehyde No, No chlorine

Privacy, Daylighting, Heat, & Fade
reduction. Oekotex 100

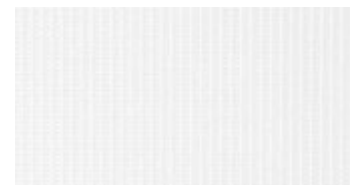
**Light Control Linen**

Privacy: 10**

Light control: 85-90+%***

70% cotton & polyester

Extremely low emission, insulating,
heat reduction, noise reduction,
Privacy, & fade reduction.

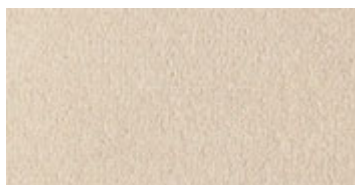
**Solar Screen 3 Frost**

Privacy: 8** 3% Solar Screen

Light control: 2%***

100% polyester

Recyclable, Day-lighting, Heat & Fade
reduction. Oekotex 100, GreenGuard
Gold, RoHS.

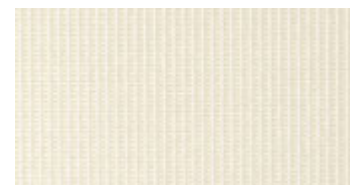
**Light Control Wheat**

Privacy: 10**

Light control: 85-90+%***

70% cotton & polyester

Extremely low emission, insulating,
heat reduction, noise reduction,
Privacy, & fade reduction.

**Solar Screen 3 Natural**

Privacy: 8** 3% Solar Screen

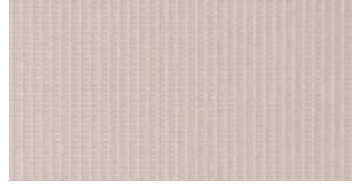
Light control: 2%***

100% polyester

Recyclable, Day-lighting, Heat &
Fade
reduction. Oekotex

**Light Control + Snow**

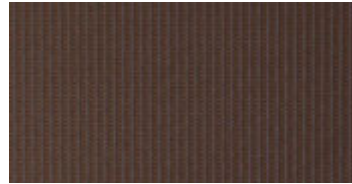
Privacy: 10**
Light control: 85-90+%***
25% cotton, 75% polyester
Lowest emission in its class,
Formaldehyde <300 , No chlorine,
Recyclable, Oekotex 100.

**Solar Screen 3 Harmony**

Privacy: 8** 3% Solar Screen
Light control: 2%***
100% polyester
Recyclable, Day-lighting, Heat &
Fade
reduction. Oekotex 100.

**Light Control + Straw**

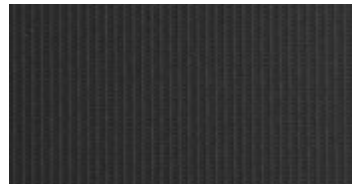
Privacy: 10**
Light control: 85-90+%***
25% cotton, 75% polyester
Lowest emission in its class,
Formaldehyde <300 , No chlorine,
Recyclable, Oekotex 100.

**Solar Screen 3 Chocolate**

Privacy: 8** 3% Solar Screen
Light control: 2%***
100% polyester
Recyclable, Day-lighting, Heat & Fade
reduction. Oekotex 100.

**Light Control + Silk**

Privacy: 10**
Light control: 85-90+%***
25% cotton, 75% polyester
Lowest emission in its class,
Formaldehyde <300 , No chlorine,
Recyclable, Oekotex 100.

**Solar Screen 3 Night**

Privacy: 8** 3% Solar Screen
Light control: 2%***
100% polyester
Recyclable, Day-lighting, Heat & Fade
reduction. Oekotex 100.

**Light Control + Stone**

Privacy: 10**
Light control: 85-90+%***
25% cotton, 75% polyester
Lowest emission in its class,
Formaldehyde <300 , No chlorine,
Recyclable, Oekotex 100.

**Solar Screen 5 First-light**

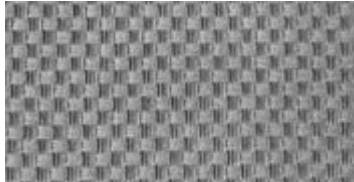
Privacy: 6** 5% Solar Screen
Light control: 2%***
89% Recycled polyester
Privacy, Daylighting, Heat & Fade
reduction.
Cradle 2 Cradle, Greenguard Gold, &
RoHS.

**Light Control + Satin**

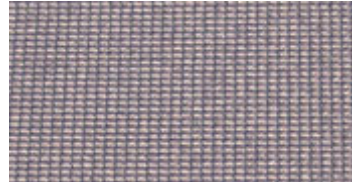
Privacy: 10**
Light control: 85-90+%***
25% cotton, 75% polyester
Lowest emission in its class,
Formaldehyde <300 , No chlorine,
Recyclable, Oekotex 100.

**Solar Screen 5 Sand**

Privacy: 6** 5% Solar Screen
Light control: 2%***
89% Recycled polyester
Privacy, Daylighting, Heat & Fade
reduction.
Cradle 2 Cradle, Greenguard Gold, &
RoHS.

**Light Control + Sterling**

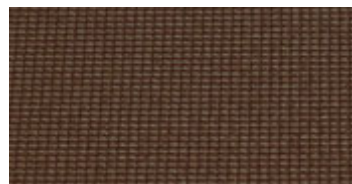
Privacy: 10**
Light control: 85-90+%***
25% cotton, 75% polyester
Lowest emission in its class,
Formaldehyde <300 , No chlorine,
Recyclable, Oekotex 100.

**Solar Screen 5 Twilight**

Privacy: 6** 5% Solar Screen
Light control: 2%***
89% Recycled polyester
Privacy, Daylighting, Heat & Fade
reduction.
Cradle 2 Cradle, Greenguard Gold, &
RoHS.

**Privacy Screen Limestone**

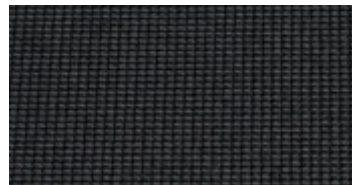
Privacy: 9**
Light control: 10%***
89% Recycled polyester
Privacy, Daylighting, Heat & Fade
reduction.
Cradle 2 Cradle, Greenguard Gold, &
RoHS.

**Solar Screen 5 Earth**

Privacy: 6** 5% Solar Screen
Light control: 2%***
89% Recycled polyester
Privacy, Daylighting, Heat & Fade
reduction.
Cradle 2 Cradle, Greenguard Gold, &
RoHS.

**Privacy Screen Sandstone**

Privacy: 9**
Light control: 10%***
89% Recycled polyester
Privacy, Daylighting, Heat & Fade
reduction.
Cradle 2 Cradle, Greenguard Gold, &
RoHS.

**Solar Screen 5 Dusk**

Privacy: 6** 5% Solar Screen
Light control: 2%***
89% Recycled polyester
Privacy, Daylighting, Heat & Fade
reduction.
Cradle 2 Cradle, Greenguard Gold, &
RoHS.

Privacy Scale:** 0 - 10

0 = No privacy/Window without treatment.

3 = Highly decorative, preserved view, reduced glare by day; diffused, minimal privacy at night.

5 = Reasonable privacy at night with detail visible only when the viewer turns to focus with intent.

7 = Adequate privacy under most lighting conditions. Light sources and forms may be visible without detail (silhouette).

10 = Full Opacity typical of light control fabrics only.

Shading Value:

Approximate percentage of the patterns ability to reduce heat gain. The higher the value, the more effective the pattern is.

Average conventional window treatment rating: 30-79%.

Insulating R Value:

Approximate value of the patterns ability to resist heat loss. The higher the value the more insulation the pattern provides. Average conventional treatment rating: R 2.0-3.0.

Light Control*:**

The approximate percentage of a patterns ability to reduce overall ambient light in an average sized room. Light control will vary depending on mounting attributes, window orientation, interior finishes, or the materials Inherent characteristics. Comparable industry average: 88%

Insulating R Value:

Most Safeshades fabrics have an R value very close to one another. The exception is the RL-O light control fabric which will have the best performance slowing summer heat gain as well as winter heat loss with an R-value in the range of 2.5. Even our most open fabric at 10% will perform in the range of an R 1.60 or higher depending on the mounting configuration.

Sound Absorbance/Control:

Some manufacturers report acoustical control as an additional asset to their shading products. While this may be measurable under the right circumstances with the right equipment, We have not seen a single person view such performance as considerable. We do agree textiles will have an effect on sound reflectance to one degree or another; we simply do not feel these are worthy selling points.

Note: Values are subjective to the individual and may vary according to the inherent qualities of the materials.

NOTES:

Due to the nature of the material: color, grain, texture, privacy and light transparency may vary according to the inherent characteristics of the materials.

Though we strive to control every last detail regarding our shade production, some patterns (including those that are GreenGuard or Oeko Tex certified) may not be suitable for our friends with chemical sensitivities. Please call for additional details.

Some patterns may require additional operating options based on ordered dimensions, conditions, and or customer desires. An Earthshade Representative will assist with recommendations.

Minor stretching and twisting is inherent to the materials and may require a varying amount of time to acclimate. Sun exposure may cause discoloration or fading.

Kindly see How-to-Order for Additional terms, conditions, and warranty detail. Contact us for more information.